

**2 Wybersley Road, High Lane, Stockport, SK6 8HB**

**£2,400 Per month**

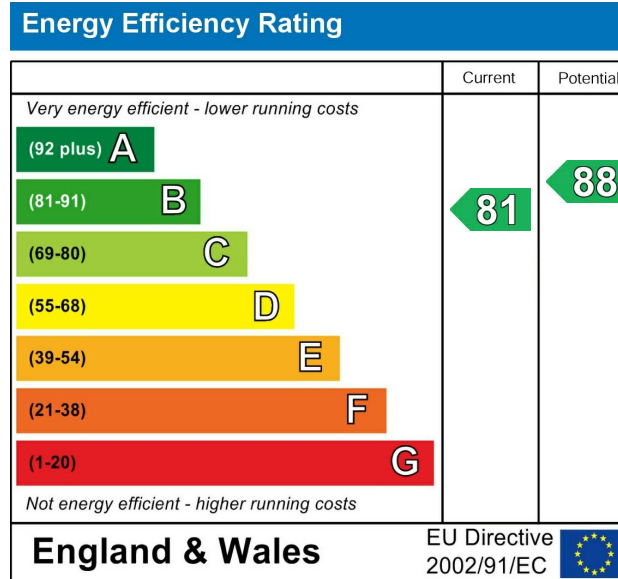
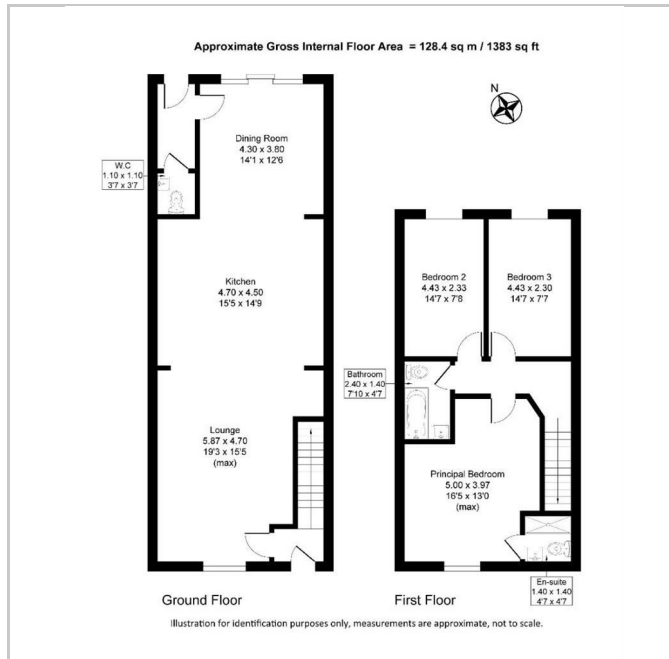
- Three Double Bedroomed Mews
- Large Open Plan Living Space
- Three Double Bedrooms
- Lawned Garden
- Nestled in the Countryside neighbouring a working Farm
- Brand New Barn Conversion
- Luxury Fitted Kitchen with Appliances
- Modern Family Bathroom and Ensuite Shower Room
- Allocated Off-Road Parking with EV Charging Points
- Available Immediately

## THE PROPERTY

This THREE DOUBLE BEDROOMED Mid-Mews Brand New Barn Conversion is AVAILABLE IMMEDIATELY. Situated in the countryside, on the border of High Lane and Disley, the property is a short drive to both High Lane and Disley Town Centres, boasting an Array of Amenities catering to every need, as well as Excellent Transport Links via the A6 and Disley Train Station.

In brief, the accommodation comprises: Entrance into a Hallway with downstairs WC. There is an Open-Plan Ground Floor, with the Dining Area to the front, a Brand New Luxury Fitted Kitchen complete with fitted appliance and an Island, with a Carpeted Living Area to the rear, with under stair storage. There is a rear hallway where stairs lead to the First Floor Landing. There are Three Double Bedrooms, with the principle boasting an Ensuite Shower Room and original wooden beam in the ceiling. There is a Brand New and Modern Family Bathroom, with shower above the bath.

Externally, there is Gated and Allocated Parking with EV Charging points to the rear, with a Small Lawned Garden. The property is offered on an Unfurnished Basis and EPC Grade- B. Council Tax to Follow. AVAILABLE NOW.



## Directions